

PRODUCT SPECIFICATIONS

LED Light Engine Fixture to fixture color consistency within a 2-step MacAdam ellipse • 2700K, 3000K, 3500K, or 4000K color temperatures are available with 80 CRI minimum • 2700K and 3000K also available with 90 CRI minimum.

Cutoff 45° cutoff to source and source image

Reflector Patented architectural wall wash trim provides superior uniformity
 • Die cast reflector in clear diffuse, black diffuse, wheat diffuse, or white finish.

Trims Style Self Flanged and Flangeless styles are available • Flange is same finish as trim unless optional painted white flange is specified
 • Flangeless is compatible with gypsum or solid ceiling materials such as wood, stone, or tile.

LED Driver Choice of two drivers to accommodate voltages from 120-277 volts AC at 50/60Hz • Dims as low as 1% with most incandescent and electronic low voltage dimmers or 0-10V dimmers • For a list of compatible dimmers, refer to [ACLXLED2-DIM](#) • Power Factor > 0.9 • Field replaceable from above or below ceiling.

Life Rated for 50,000 hrs at 70% lumen maintenance.

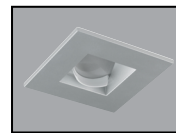
Codes/Labels UL and cUL listed for wet locations • ICAT rated new construction fixture meets energy code Air Leakage requirements per ASTM E283 • ICAT new construction luminaire is Chicago Plenum (CCEA) approved standard • ICAT housings are rated for direct contact with insulation, including spray foam insulation with R-Value of 3.7 per inch or less • Union made.

New Construction Mounting Features patented (US Patent 8,038,113) Pro-VI™ bar hanger system, permitting quick placement of housing with 24" on-center joists or suspended ceilings • ICAT new construction luminaire also features vertically adjustable mounting brackets (butterfly brackets) • V-Notch in plaster frame and patented (US Patent 8,277,090) Tru-Line™ Platform featuring +/- 1/2" translation and +/- 45° aperture rotation aids fixture alignment after installation, prior to drywall.

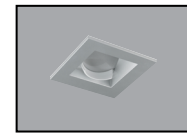
Wiring ICAT housing includes (2) 1/2" knockouts in access plate, and is compatible with rigid conduit and flexible supply • Non-ICAT housings include (2) 1/2" knockouts with pryout slots in junction box and are compatible with flexible electrical supply only • All housings supplied with quick connect electrical connectors.

Ceiling Thickness 1/2" - 1 1/2" ceiling • Vertical aiming in ceiling 1" to 1 1/2" is reduced from 40° to 25°.

**2" LED UNIVERSAL RECESSED
 ADJUSTABLE/DOWNLIGHT/WALL WASH
 800/1200/1500 LUMEN
 SQUARE ARCHITECTURAL WALL WASH
 NEW CONSTRUCTION
 AX2SQ A with 2SQWW Trim**



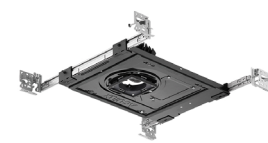
Self-Flanged



Flangeless



AX2SQ A
ICAT



AX2SQ A

Buy American Act This product is assembled in the USA and meets the Buy America(n) government procurement requirements under FAR, DFARS and DOT regulations. Please refer to www.acuitybrands.com/buy-american for additional information.

Warranty - 5YR 5-year limited warranty. This is the only warranty provided and no other statements in this specification sheet create any warranty of any kind. All other express and implied warranties are disclaimed. Complete warranty terms located at: www.acuitybrands.com/support/warranty/terms-and-conditions

NOTE: Actual performance may differ as a result of end-user environment and application. All values are design or typical values, measured under laboratory conditions at 25°C. Specifications subject to change without notice.

ORDERING INFORMATION

Example: AX2SQ A G2 08LM 30K 80CRI 24D FPC 120 2SQWW BD WHSF

HOUSING OPTIONS	Series / Housing Style		Lumens		CCT		CRI	Beam		Driver		Voltage ²	Options	
		AX2SQ A G2	New Construction Universal ADJ/DL/WW	08LM	800 Lumens	27K	2700K	80CRI	35D	35° beam	FPC	Phase cut dimming, 5% dim	120	CP ICAT
			12LM	1200 Lumens	30K	3000K	90CRI ¹			ZT	0-10V Dimming	MVOLT (120-277)	NLIGHT ³	nLight dimming pack controls (Must mount remotely)
			15LM	1500 Lumens	35K	3500K								
					40K	4000K								

TRIM OPTIONS	Square Trim Style	Reflector Finish	Flange Style / Finish	Ceiling Installation
		ADJUSTABLE WALL WASH	BD Black Diffuse	SELF FLANGED
	2SQWW Architectural Wall Wash	CD Clear Diffuse	SF Flange is same finish as reflector	————— Ceiling ≤ .75"
		W White Paint	WHSF White painted flange	CTA2SQ/120 Ceiling 0.75" - 1.20"
		WTD Wheat Diffuse	FLANGELESS ⁴	CTA2SQ/150 Ceiling 1.20" - 1.50"
			FM Flangeless	FLANGELESS, GYPSUM
				FMA2SQ/075 Ceiling ≤ .75"
				FMA2SQ/120 Ceiling 0.75" - 1.20"
				FMA2SQ/150 Ceiling 1.20" - 1.50"

Ordering Notes

¹ 90CRI available on 27K and 30K only. ⁴ Flangeless trims in drywall ceilings must specify ceiling installation (FMA2SQ).

² MVOLT standard on ZT, 120 standard on FPC.

³ NLIGHT available on ZT only.

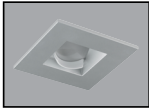
2" LED UNIVERSAL RECESSED ADJUSTABLE/DOWNLIGHT/WALL WASH 800/1200/1500 LUMEN

SQUARE ARCHITECTURAL WALL WASH NEW CONSTRUCTION

AX2SQ A with 2SQWW Trim

TRIM SELECTION

2SQWW Architectural Wall Wash



Self-Flanged

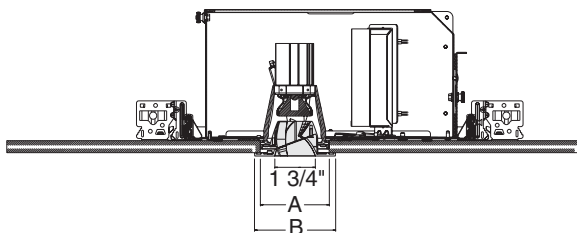
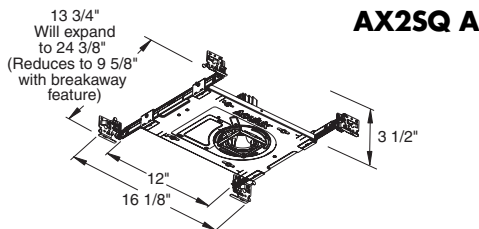
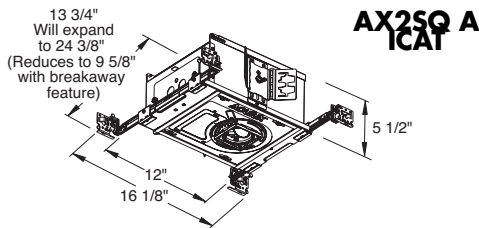


Flangeless



DIMENSIONS

NEW CONSTRUCTION



ACCESSORIES

Cat. #	Description
HB1	(2) Real Nail 3 Bar Hangers
HB26	(2) 26" C-Channel Bar Hangers
HB50	(2) 50" C-Channel Bar Hangers
LB27	(2) 27" Linear Bar Hangers
IIS 35 HE	Up to 35W Remote Mount Micro Inverter (AX2SQ 2A G2 15LM and AX2SQ 3A G2 12LM Excluded)

To order, specify catalog number.

ELECTRICAL DATA

Lumen Package	08LM		12LM			15LM			
	FPC	ZT	FPC	ZT	FPC	ZT			
Voltage	120	277	120	277	120	277	120	277	
Input Power	10.0	9.9	10.1	14.7	14.3	14.3	17.3	16.5	16.4
Input Current	0.08	0.08	0.04	0.12	0.12	0.06	0.14	0.14	0.06
Frequency	50/60Hz		50/60Hz			50/60Hz			
Power Factor	0.99	0.99	0.9	0.99	0.99	0.92	0.99	0.99	0.92

Trim Style	Cutout Size (A)	Flange Dimension (B)
Self Flanged Trims	2-7/8" x 2-7/8"	3.410"
Flangeless Trims (Solid Ceiling)	2-7/8" x 2-7/8"	2.875"
Flangeless Trims (Drywall Ceiling)	3" x 3"	2.875"

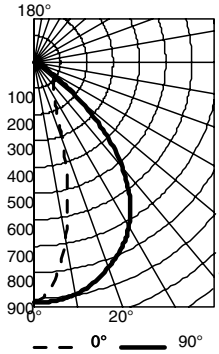
2" LED UNIVERSAL RECESSED ADJUSTABLE/DOWNLIGHT/WALL WASH 800/1200/1500 LUMEN

SQUARE WALL WASH NEW CONSTRUCTION

AX2SQ A with 2SQWW Trim

PHOTOMETRICS

AX2SQ A G2 15LM 30K 80CRI 35D FPC 120 2SQWW CD, 3000K LEDs, input watts: 17.3, delivered lumens: 834, LM/W = 48, test no. PT07172821R, tested in accordance to IESNA LM-79



CP Summary

	0°	90
0°	912	912
5°	842	911
15°	488	869
25°	200	783
35°	125	635
45°	108	381
55°	89	105
65°	66	21
75°	36	9
85°	13	2
90°	0	0

Coefficients of Utilization

pc	pw	20%						50%					
		70%	50%	30%	50%	30%	10%	50%	30%	10%	50%	30%	10%
0	119	119	119	116	116	116	111	111	111	111	111	111	111
1	112	109	106	106	104	101	102	100	98	98	98	98	98
2	105	99	94	97	93	89	94	90	87	87	87	87	87
3	98	91	85	89	84	79	86	82	78	78	78	78	78
4	92	83	77	82	76	71	80	75	70	70	70	70	70
5	87	77	70	76	70	65	74	69	64	64	64	64	64
6	82	71	65	71	64	59	69	63	59	59	59	59	59
7	77	67	60	66	59	55	64	59	54	54	54	54	54
8	73	62	55	62	55	51	60	55	50	50	50	50	50
9	69	58	52	58	51	47	57	51	47	47	47	47	47
10	66	55	48	54	48	44	54	48	44	44	44	44	44

Zonal Lumen Summary

Zone	Lumens	% Lamp	% Fixture
0°- 30°	454	54.5	54.5
0°- 40°	612	73.4	73.4
0°- 60°	781	93.8	93.8
0°- 90°	833	100.0	100.0
90°- 180°	0	0.0	0.0
0°- 180°	833	100.0	100.0

FOOTCANDLES ON WALL FROM MULTIPLE FIXTURES

Fixture Distance to Wall	18"			24"		
	18"	24"	18"	24"		
1'	31 30 31	25 22 25	20 20 20	16 16 16		
2'	34 35 34	27 26 27	29 29 29	22 22 22		
3'	27 28 27	22 22 22	23 23 23	19 19 19		
4'	25 26 25	20 20 20	20 20 20	16 17 16		
5'	23 23 23	19 19 19	19 19 19	16 16 16		
6'	19 20 19	16 17 16	18 18 18	15 15 15		
7'	16 17 16	14 14 14	16 16 16	14 14 14		
8'	14 14 14	12 12 12	14 14 14	13 13 13		
9'	11 11 11	10 10 10	11 12 11	10 10 10		

Photometry is at 3000K CCT

LUMEN OUTPUT MULTIPLIERS

Color Temperature	CRI	Multiplier
2700K	80	0.95
3000K	80	1.00
3500K	80	1.05
4000K	80	1.10

Color Temperature	CRI	Multiplier
2700K	90	0.83
3000K	90	0.87

Lumen Package	Multiplier
800	0.58
1200	0.86
1500	1.00